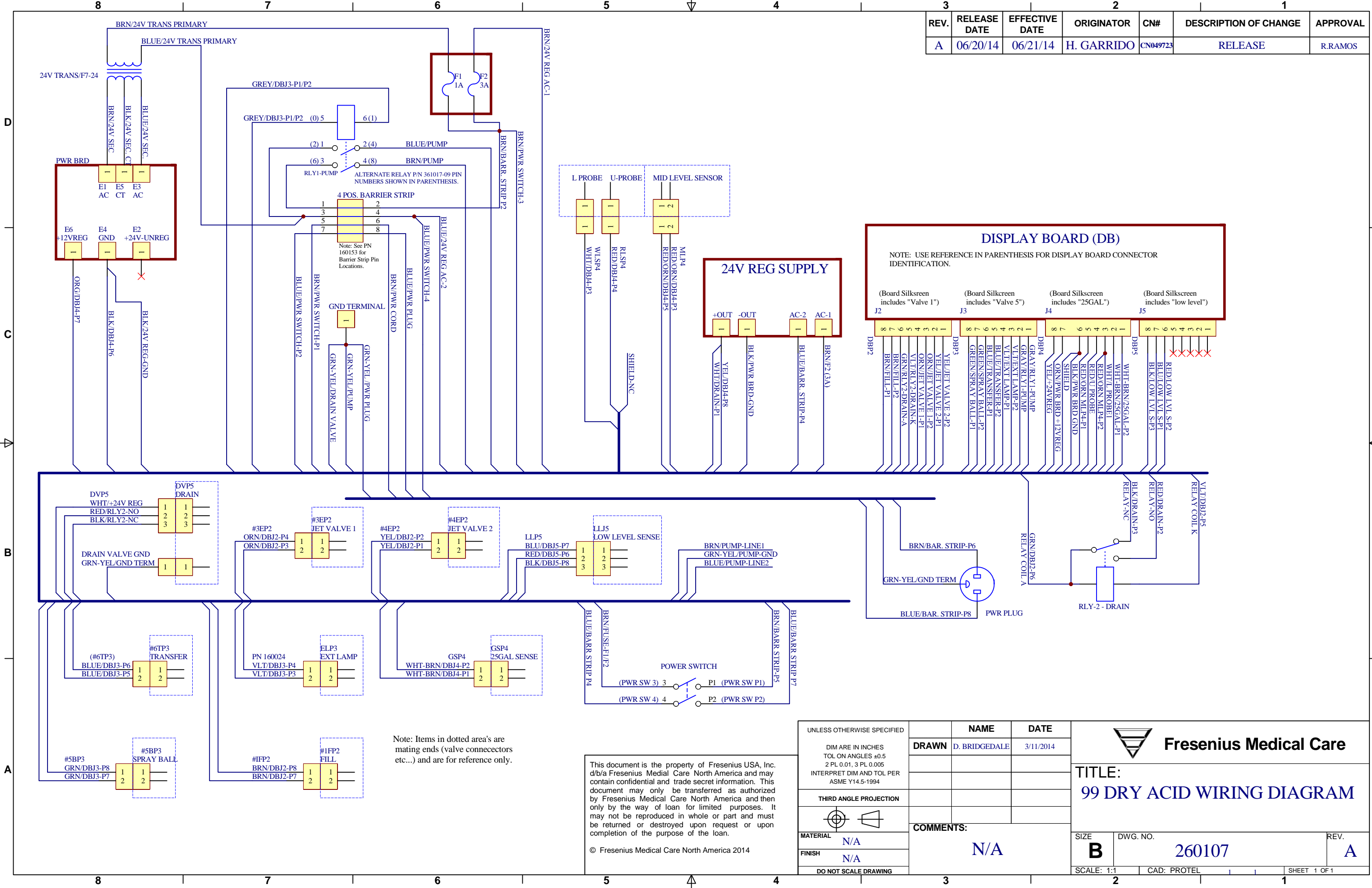


REV.	RELEASE DATE	EFFECTIVE DATE	ORIGINATOR	CN#	DESCRIPTION OF CHANGE	APPROVAL
A	06/20/14	06/21/14	H. GARRIDO	CN049723	RELEASE	R.RAMOS



Note: Items in dotted area's are mating ends (valve connectors etc...) and are for reference only.

This document is the property of Fresenius USA, Inc. db/a Fresenius Medical Care North America and may contain confidential and trade secret information. This document may only be transferred as authorized by Fresenius Medical Care North America and then only by the way of loan for limited purposes. It may not be reproduced in whole or part and must be returned or destroyed upon request or upon completion of the purpose of the loan.

© Fresenius Medical Care North America 2014

UNLESS OTHERWISE SPECIFIED		NAME	DATE
DIM ARE IN INCHES	TOL ON ANGLES ±0.5	DRAWN	D. BRIDGEDALE
2 PL 0.01, 3 PL 0.005	INTERPRET DIM AND TOL PER ASME Y14.5-1994		3/11/2014
THIRD ANGLE PROJECTION			
MATERIAL N/A		COMMENTS: N/A	
FINISH N/A			
DO NOT SCALE DRAWING			

**Fresenius Medical Care**

TITLE:  
**99 DRY ACID WIRING DIAGRAM**

SIZE <b>B</b>	DWG. NO. <b>260107</b>	REV. <b>A</b>
SCALE: 1:1	CAD: PROTEL	SHEET 1 OF 1